



**TopUp  
Learning  
London**

**2025**



**WELCOME TO A WORLD CLASS EXPERIENCE  
STUDY ENGLISH IN LONDON (Tti)**

# CONTENTS

<b>Why choose TopUp Learning London (Tti)</b>	<b>03</b>
<b>TopUp Learning London (Tti) Since 1998</b>	<b>04</b>
<b>Nationality Mix and Student Welfare</b>	<b>05</b>
<b>Chart Your Progress</b>	<b>06</b>
<b>Courses in London</b>	<b>07</b>
<b>Weekly Timetable</b>	<b>08</b>
<b>General English and 30+ Adult English</b>	<b>09</b>
<b>IELTS and Cambridge Exam Preparation</b>	<b>10</b>
<b>VIP English, 30+ VIP English and One to One Lessons</b>	<b>11</b>
<b>English Plus Modules</b>	<b>12</b>
<b>Christmas and New Year Course</b>	<b>14</b>
<b>Four Season Explorer (Bespoke Group)</b>	<b>15</b>
<b>Social Programme</b>	<b>16</b>
<b>Where To Stay In London</b>	<b>17</b>





**We are an independent boutique school, not part of a chain**



**Excellent nationality mix**



**TopUp Learning (Tti) is very close to centre of London - 10 mins to Oxford Circus by tube**



**Camden is an interesting, creative and vibrant location**



**We have a very good choice of accommodation, some within walking distance**



**Since the school was established in 1998 over 30,000 students have chosen to study with us**



**Students have described Tti as their 'Home from Home'**



**We are accredited by the British Council and a member of English UK**



**You will study with enthusiastic qualified teachers who love to teach**



**The timetable is flexible with option classes available and some free workshops**



**Regular one-to-one progress tutorial with your teacher**



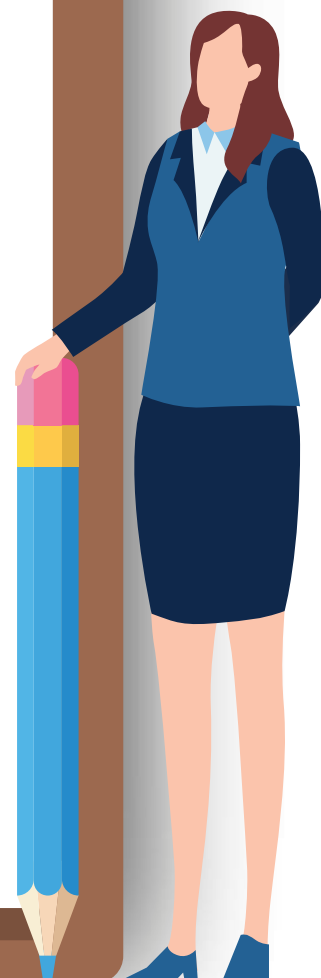
**Our teachers are involved in our weekly Social Programme**



**We provide free tea, coffee, fresh fruit and snacks all day for you to relax with your classmates.**



**We know you'll love your time here!**





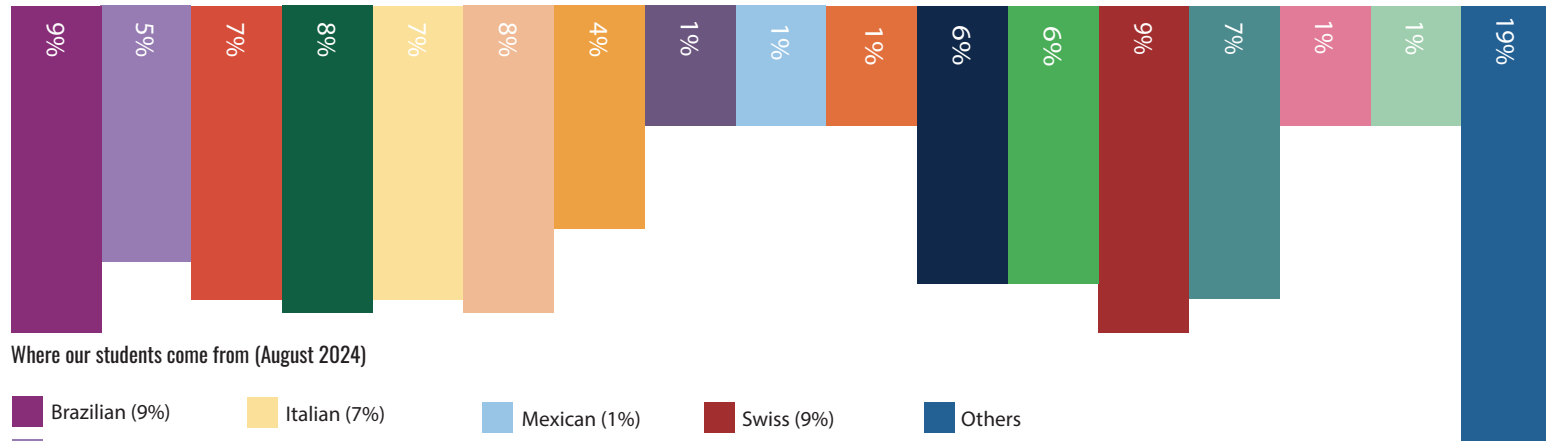


**MEET THE PRINCIPAL**  
**Dr. Sam Malafeh**

At TopUp Learning London (Tti) you will find the warmest welcome and a safe, comfortable learning enviroment. The TopUp Learning London (Tti) team look forward to meeting you soon!



# NATIONALITY MIX AND STUDENT WELFARE



Where our students come from (August 2024)

Brazilian (9%)	Italian (7%)	Mexican (1%)	Swiss (9%)	Others
Colombian (5%)	Japanese (8%)	Polish (1%)	Taiwanese (7%)	
French (7%)	Korean (4%)	Saudi (6%)	Thai (1%)	
German (8%)	Kuwaiti (1%)	Spanish (6%)	Turkish (1%)	

Our dedicated support staff are here to help if you have any personal or emotional problems during your stay, or if you just need someone to talk to. They can give support and confidential advice for a range of welfare issues.

Our support staff can be contacted by phone or email, and the school has a 24-hour emergency phone. Students receive this contact information in the student handbook.

## SAFEGUARDING STATEMENT

TotUp Learning London (Tti) is committed to safeguarding and promoting the welfare of everyone, in particular those aged 16-17 years old. We are fully committed to ensuring that consistent effective safeguarding procedures are in place both on and off-site to support everyone (including but not limited to staff, students, host families and group leaders) at the school. All staff share this commitment and behave accordingly.

## STUDENTS AGED 16 AND 17

While the majority of our students are 18 and older, we welcome students aged 16 and above. It should, however, be noted that we cannot provide 24 hour supervision. If they are not staying with a relative or family friend, 16 and 17 year olds will be required to stay in half-board homestay accommodation.

We ask that parents or guardians of students aged 16 and 17 read our Notes for Parents and Guardian of students aged under 18 before booking their child to study here. This will help you understand what to expect when your child comes to study with us.

## ADVICE FOR 16 AND 17 YEAR OLDS

We have a Code of Conduct for all our students which gives advice and support about studying with us and staying in the UK. Download the Code of Conduct at <https://www.ttischool.com/learn-english-in-london/policy/> for more information.

## TRAVEL FOR 16 AND 17 YEAR OLDS STUDYING IN THE UK

Students aged 16 or 17 coming to the UK will need to have a completed Letter of Consent to Travel. Please download it from <https://www.ttischool.com/learn-english-in-london/policy/> or request via email from us.

## CONSENT FORM FOR 16 AND 17 YEAR OLDS

The parents/guardians of students aged 16 or 17 studying at Tti School of English are asked to complete a Parental Agreement Letter for their child. This includes curfew times and we ask you to keep within our guidelines when deciding these. This form must be sent at the time of booking. Please note – we cannot issue enrolment documents until we have received this form.



At TopUp Learning London (Tti), we have a clear, student-centred and supportive process for improving your English language level

# 1

## ARRIVAL DAY

On arrival day, you will have a one-to-one interview with a teacher to further assess and clarify your English level. You'll also be given course materials to help guide you through your learning. At TopUp Learning London (Tti), you will always be placed in a class with people of a similar language level to you.



# 2

## EVERY WEEK, EVERY LESSON

During your course, teachers continually assess your progress and suggest areas for improvement. Every week your teacher will design a range of clear learning outcomes, linked to the Common European Framework Reference for languages (CEFR).



# 3

## STUDENT HOUR

You can meet with our Director of Studies in Student Hour to talk about:

- Your progress
- Your learning goals
- Your study plan and course options
- How to apply for jobs or university



# 4

## ONE-TO-ONE PROGRESS TUTORIAL

Every four weeks you will have a one-to-one progress tutorial with your Director of Studies. You will talk about your achievements, your strengths and weaknesses and how to progress to the next level. Teachers will help you to reflect on and assess your own progress, to help you become an independent and confident learner.

(Only for students who are enrolled to an English course for 12 weeks & above)



# 5

## YOUR NEW ENGLISH LEVEL

You will receive a certificate at the end of your course, which confirms the new English level you have reached.



**We offer a wide choice of courses, and you can  
start any Monday on all General  
English courses**

<b>GENERAL ENGLISH</b>	Focus on your confidence and fluency in spoken English and improve your English skills while developing your knowledge of grammar, vocabulary and pronunciation. Our teachers will inspire you to achieve the best you can in the time you have available. Maximum 15 per class, average 12. We have Beginner, Elementary, Pre-Intermediate, Intermediate, Upper-Intermediate and Advanced levels.
<b>30+ ADULT ENGLISH</b>	Study in an adult environment with other mature students. You will be able to design a syllabus with your teacher and group to create a more personalised course. Maximum 12 per class, average 9. B1 level or higher.
<b>IELTS EXAM PREPARATION</b>	A course to help you achieve the score you need! Our teachers are very well experienced in motivating students and will guide you through the exam process. Maximum 15 per class, average 9.
<b>CAMBRIDGE EXAM PREPARATION</b>	Closed group courses structured to ensure success! You will follow a syllabus designed around the structure of the exam set by Cambridge. You can choose to enrol on any Monday for any number of weeks between 1-12 weeks or enrol for a full study period of 12 weeks. Maximum 15 per class, average 9.
<b>VIP ENGLISH</b>	The perfect course for those who wish to improve their General English and have specific language needs. You will gain confidence and improve your English skills while developing your knowledge of grammar, vocabulary and pronunciation. This course is combined with private lessons where teachers will create an individualised programme based on students' wants, needs and interests.
<b>30+ VIP ENGLISH</b>	A tailored course for the more mature learner. You will be able to design a syllabus with your teacher and group to create a more personalised course. This course is combined with tailor made courses to suit students' particular needs. The teachers will create an individualised programme based on students' wants, needs and interests.
<b>ONE TO ONE LESSONS</b>	This is the fastest and most flexible way to learn English. Our one-to-one lessons ensure your learning time is 100% dedicated to you. You can choose your own timetable so you really can fit your learning around your lifestyle.
<b>ENGLISH PLUS MODULES</b>	The English Plus modules are group classes combined with our General English courses. They consist of 5 lessons per week or 10 lessons per week and cover a variety of specific language practice. Maximum 15 per class, average 12.
<b>CHRISTMAS AND NEW YEAR</b>	The perfect gift for friends, family – or for yourself! Improve your language skills during the morning and join in with London's magical festivities during the afternoon.
<b>FOUR SEASON EXPLORER (BESPOKE GROUP)</b>	Group programmes are very flexible and can be offered as closed programmes or as an open programme. Likewise, timetables, dates and course content are all designed to fit the groups needs and requirements.

# WEEKLY TIMETABLE



09:00 AM	10:00 AM	11:00 AM	12:00 PM	01:00 PM	02:00 PM	03:00 PM	04:00 PM	5:00 PM+
15 lessons (9:00 - 11:50am)			5 lessons (12:30 - 1:20pm)	5 lessons (1:30 - 2:20pm)	10 lessons (2:30 - 4:10pm)			
			10 lessons (12:20pm - 2:20pm)					
			PLUS MODULE 1 5 lessons (12:30 - 1:20pm)	PLUS MODULE 2 5 lessons (1:30 - 2:20pm)				
25 lessons (9:00 - 2:20pm)								
25 lessons (9:00 - 2:20pm)								
One-to-one Lesson can be booked at a time that suits you.								

## KEY

- General English
- 30+ Adult English
- IELTS Exam Preparation
- Cambridge Exam Preparation
- One-to-one Lesson
- Plus Modules 1 & 2

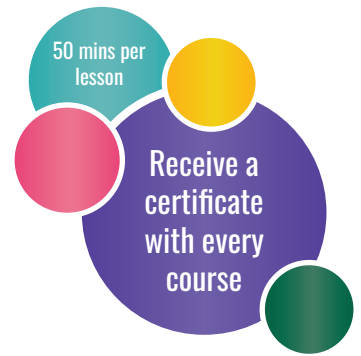
An example of how you can design a 25 lesson study week at Tti:



For a super intensive course you can add a 10 lesson afternoon course or arrange extra one to one lessons. Please contact us for advice.



## Courses for adults (ages 16+) throughout the year. You can take one course or combine courses to create your own programme



### WHY CHOOSE OUR GENERAL ENGLISH?

- Develop your knowledge of grammar, vocabulary and pronunciation
- Practise the 4 key language skills of reading, writing, listening and speaking through interactive classroom activities, local cultural outings and guided self-study
- Flexibility – You can choose a part time or full time course with a flexible timetable – you can study all day or just in the morning or afternoon and create the perfect balance between learning and free time
- Our teachers will inspire you to achieve the very best you can in the time you have available
- Maximum 15 students per class, average 10

### WHY CHOOSE OUR 30+ ADULT ENGLISH?

- Suitable for those 30 years and above
- A tailor-made programme just for you. Our enthusiastic, qualified teachers will create your course through a negotiated syllabus for a more personalised programme
- Maximum 12 students per class, average 9

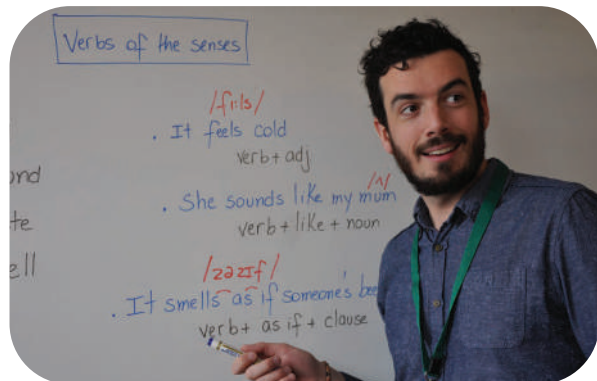
LESSONS PER WEEK	DESCRIPTION
General English 10 (8.4 hours)	With only 10 lessons per week, this course provides the most flexibility to fit around your other commitments, whether that's your work, your family, or simply exploring London's famous culture.
General English 15 (12.5 hours)	With 15 lessons per week, this course provides the class time to develop your language skills, plus the freedom to develop new friendships and discover London's famous culture for yourself.
General English 20 (16.7 hours)	Our most popular course, offering you the perfect balance between learning and free time. So as well as developing your English language skills including grammar, vocabulary, communicating and pronunciation, you can enjoy the freedom to develop new friendships and discover London's famous culture.
General English 25 (20.8 hours)	This course gives you lots of class time to develop your skills quickly. Plus a couple of hours free each day for self-study, socialising or to go out and discover your new home city.
General English 30 (25 hours)	Our Intensive English courses are perfect for students who want to study hard and make rapid progress. This course is a great choice if your time in the UK is limited and you want to make the most of it.
General English 35 (29.2 hours)	This full-time course offers more class time than any other. But, like all our courses, we make sure your learning experience is rich, varied and above all enjoyable.



# IELTS EXAM PREPARATION

IELTS, the 'International English Language Testing System', is the key to travel, study and work in English speaking countries. IELTS is accepted by more than 10,000 organisations worldwide, including higher education institutions, professional associations, and private employers. This highly focused course is the perfect preparation for your IELTS exam. You must have an intermediate level of English and pass our IELTS pre-test before being accepted onto the course.

## WHY CHOOSE OUR IELTS PREPARATION COURSE?



- Flexibility – You can start your course any Monday
- Small classes – Maximum of 15 students, average 9
- Real Exam Practice – At TopUp Learning London (Tti) you will sit regular tests and full mock exams during the course
- Tutorials – You will have one-to-one tutorials with your teachers to monitor your progress
- You can combine your IELTS course with 15 morning General English lessons to intensify your chosen programme

## STUDENT TESTIMONIALS

### SILVIA LOCATELLI - ITALY

"Taking the course for the preparation of my IELTS exam was the best idea in order to achieve a high score! Competent teachers encouraged me to work on my weaknesses and at the same time provided important tips to achieve higher scores in other sections of the test."

"In addition, weekly mock exams significantly helped me to concentrate for a long time and immediate corrections helped me to gradually decrease the number of my mistakes."

# CAMBRIDGE EXAM PREPARATION

The new Cambridge B2 First, and Cambridge C1 Advanced qualifications will open the door to businesses, educational institutions and government departments around the world. They are widely recognised as proof of outstanding English language skills and can also be used for your university applications in the UK.

## WHY CHOOSE OUR CAMBRIDGE B2 FIRST & C1 ADVANCED COURSES?



- Small classes – Maximum of 15 students, average 9 in closed groups
- Flexibility – To start the course on any Monday or Choose an intensive 12- week course
- Qualified experienced teachers who will motivate you to realise your examination goals
- Real exam practice – At TopUp Learning London (Tti) you will sit regular tests and full mock exams during your course
- Included in the course price – a course book, one to one tutorials with your teachers to monitor your progress and social programme activities to practise your communication skills further
- Achieve the exam success needed for international careers and study

The perfect course for those who wish to improve their general English and specific language needs. Students will have a chance to develop and improve their English skills of reading, writing, speaking, listening, grammar, vocabulary and pronunciation combined with tailor made courses to suit their particular needs. The teachers will create an individualised programme based on students' wants, needs and interests.

## WHY CHOOSE OUR VIP ENGLISH COURSE?

Students will:

- Gain increased confidence in their General English skills
- Be able to gain skills in their specialised area of expertise
- Decide on topics and pace that suits their individual needs
- Receive productive, tailor made and rewarding lessons to suit their individual needs

20 lessons/25 lessons  
per week



5 one-to-one lessons  
per week

Options for various  
English courses  
or  
Exam Preparation  
(IELTS / Cambridge)



Individualised lessons  
for  
Selected Topics



## ONE TO ONE LESSONS

This is the fastest and most flexible way to learn English. Our one-to-one lessons ensure your learning time is 100% dedicated to you. You can choose your own timetable so you really can fit your learning around your lifestyle. Each lesson lasts 55 minutes.

## SPECIALISED PROGRAMMES

Examples of courses that we can deliver include Medical English, Legal English, English for Finance and Banking and English for Oil Industry Professionals.

## FAMILY PROGRAMMES

We will create a personalised course tailored to the needs of each family member. Children aged 16 or under will study on a one-to-one basis.

LESSONS	PRICE (FACE-TO-FACE LESSON)	PRICE (ONLINE LESSON)
per lessons	£90	£60
4 lessons	£320	£216
8 lessons	£610	£408
12 lessons	£864	£540
24 lessons	£1,600	£936
48 lessons	£2,743	£1,716



# ENGLISH PLUS MODULES

The English Plus modules are group classes combined with our General English courses. They consist of 5 lessons or 10 lessons per week and cover a variety of specific language practice.

Applies to all students enrolled for minimum 20 lessons + per week



15 lessons of  
General English / IELTS



5 lesson of  
Plus Modules



5 lesson of  
Plus Modules



## BRITISH CULTURE

In this module students will practise English Language skills in the context of British Culture. It covers a great range of topics, including : British history, politics, arts, music, humour, the monarchy, sports, employment, leisure activities, social customs and life in Britain in general.

Students will:

- Gain greater awareness of contemporary issues and culture in Britain
- Increase confidence in understanding, socialising and working with British people



## BUSINESS ENGLISH

This module is designed to help pre-experience and professional working students develop the practical English skills they need for the business world. Students will gain confidence in speaking and using the English needed for the workplace as well as having the opportunity to focus on some specific business skills such as participating in business meetings, giving presentations, negotiating and writing reports, e-mails and letters.

Students will:

- Gain greater awareness of the skills needed for the workplace
- Increase confidence in using English in a business environment



## CAMBRIDGE EXAM SKILLS\*

\*Students will be required to complete a pre-course test to assess their skill level

This module focuses on Cambridge B2 and C1 qualifications which opens the door to thousands of global businesses, educational institutions and government departments around the world. It is widely recognised as a symbol of outstanding English language skills and can also be used for your university applications in the UK and Australia.

Students will:

- Have the necessary exam skills, knowledge of all the papers, and the confidence to deliver their best under exam conditions
- Learn clear strategies to answer the different question types
- Be able to assess their progress and prepare for exam conditions, by taking part in regular tests and full mock exams
- Complement classroom learning with homework assignments and regular tutorials

## IELTS EXAM PREPARATION

The IELTS (International English Language Testing Service) is an internationally recognised examination and entry requirement for many universities in the UK and other English speaking countries. IELTS Exam Preparation Course is designed to help you succeed in your IELTS Academic exam and obtain the score you need. In addition, the course is ideal if you want to have a qualification that is widely recognised by international employers.

Students will:

- Gain deeper understanding of the requirements of the IELTS exam
- Develop language skills to succeed at the IELTS examination
- Be able to achieve the score you need
- Gain more confidence in their communication skills and build on their general English proficiency

Students will learn to apply effective strategies, techniques, and advice for all components of the IELTS exam—Reading, Listening, Speaking, and Writing. They will gain a clear understanding of what is required to achieve their desired score, while also strengthening their grasp of English grammar and expanding their vocabulary through focused IELTS practice. Students will develop their writing skills by learning to analyse data and texts for more accurate and structured responses. Their listening skills will improve as they engage with a variety of talks, lectures, programmes, and conversations. Speaking practice will involve using a wide range of language commonly used in the exam. In addition, students will benefit from one-to-one tutorials with a teacher to monitor their progress and will regularly participate in mock exams to build confidence and assess their readiness for the real test.



## CONVERSATION

This module aims to increase students' ability to communicate in spoken English. This should include a focus on basic speaking skills such as turn-taking, agreeing/disagreeing and giving and responding to opinions. The focus is on building students' confidence, fluency and pronunciation when speaking.

Students will:

- Practise speaking for accuracy and fluency
- Increase their range of functional and (semi-) fixed expressions for speaking
- Heighten their awareness of individual sounds, stress and intonation patterns in English as well as some aspects of connected speech
- Enhance their ability to engage in and maintain conversation



## ART AND FASHION

This module is an ideal option for students who would like to learn specialist vocabulary in the field of Art and Fashion. It is designed to cater for those interested in these areas and for those who wish to study these subjects in the future at university or college.

Students will:

- Gain greater awareness of topic specific vocabulary
- Practise English skills in the context of Art and Fashion





# CHRISTMAS AND NEW YEAR COURSE

What better time to come to London? The perfect gift for friends, family or yourself!

London comes alive during the Christmas period with beautiful decorations Christmas markets, ice-rinks, Christmas concerts and a fantastic atmosphere throughout the city. With our Christmas course you can improve your English skills while enjoying the festivities. We organise a special Christmas social programme after classes so that you can make the most of everything that is going on in London at this magical time of the year.



- Visit a Christmas market
  - Enjoy a Christmas pub lunch
  - Visit the world famous Harrods, Liberty's and Fortnum & Mason
- Must do in London at Christmas
  - Explore Winter Wonderland in Hyde Park
  - See the Christmas Tree in Trafalgar Square and the lights on Oxford Street

Christmas and New Year Course 2025 (Levels: Pre-Intermediate - Advanced)							
Class Days		No. of Lessons per week	Course Dates	Lesson Times	Hours per week	Levels	Price
Week 1	Mon - Fri	15	Dec 22th - 24th	9am - 1:10pm	12.5	Pre-Intermediate - Advanced	£331
Week 2	Wed - Fri	15	Dec 29th - 31st	9am - 1:10pm	12.5	Pre-Intermediate - Advanced	£331
Week 1 + 2		30	Dec 22nd - Jan 2nd (excluding bank & school holidays)	9am - 1:10pm	25	Pre-Intermediate - Advanced	£662



HELICIO MARIO BRUNELLI JUNIOR - BRAZIL

"Christmas is a great time to be in London. This is my second time at TIU at this time of the year. It's a great opportunity to meet people from around the world and improve my English at the same time."



DANIELA D'ALESSIO - ITALY

"I really enjoyed the Christmas Course. It was perfect and if I can come back again next year then I will!"



# FOUR SEASON EXPLORER (BESPOKE GROUP)



Life may have been on pause recently, but that doesn't mean you can't start dreaming of exploring Great Britain's beautiful countryside, wandering sandy shores and discovering historic landmarks once more.

The UK's traditional pubs, stately homes and glorious gardens are reopening, ready to give you a warm British welcome once again. In the meantime, you can still delve into heritage, revel in culture, indulge in English conversation and dig into foodie delights from afar. Enquire today for TopUp Learning London (Tti) Four Season Explorer Package and it's all you need to imagine a true taste of Britain.

At TopUp Learning London (Tti) we have considerable experience in managing and successfully delivering specialist group courses. These tailored and competitively-priced programmes can cover a broad range of English language and teacher training requirements.

Group programmes are very flexible and can be offered as closed programmes or as an open programme. Likewise, timetables, dates and course content are all designed to fit the groups needs and requirements.

## WHY CHOOSE OUR GROUP PROGRAMME?

- Wide range of course options available
- Choice of residential, studio, or homestay accommodation
- Bespoke daily activity programme
- Mix with different nationalities
- Receive an end of course certificate
- Our school in Camden is perfectly placed for your group to discover and explore a vibrant new culture



SOCIAL PROGRAMME

This is an example of the full programme of social activities which you will be given at the beginning of each month so that you can plan to enjoy your time here in London. There is so much to do in Camden every night of the week that you will never get bored. We have many activities here at the school and we often go and listen to live music or go to the theatre in the centre of town. Other times we go ice-skating, bowling, visit salsa bars, clubs or see a film just around the corner. Prices are advertised although some activities are free. Regents Park, Primrose Hill and London Zoo are wonderful outdoor spaces ten minutes walk from school and of course Camden Lock Market is on our doorstep. London also has lots of free museums and galleries as well as endless shopping opportunities!

2024 OCTOBER SOCIAL PROGRAMME

MONDAY 30 <sup>TH</sup>		TUESDAY 1 <sup>ST</sup>		WEDNESDAY 2 <sup>ND</sup>		THURSDAY 3 <sup>RD</sup>		FRIDAY 4 <sup>TH</sup>		SATURDAY 5 <sup>TH</sup>		SUNDAY 6 <sup>TH</sup>	
CAMDEN TOUR		Greenwich		WRITING WORKSHOP		YOUNG V&A		Visit Hyde Park		Why not visit The Cotswolds		Today's suggestion! Brunch at Columbia Road Flower Market	
Welcome to London! Guided tour of Camden for New students! Meet in the Study Lounge @ 2.30pm		Enjoy the amazing views, The Royal Naval College, The Meridian Line & The Painted Hall Tube: Piccadilly Circus						Take a relaxing winter stroll through one of London's most beautiful Location: NW1 4NR		£44		Tube: Shoreditch	
MONDAY 6 <sup>TH</sup>		TUESDAY 8 <sup>TH</sup>		WEDNESDAY 9 <sup>TH</sup>		THURSDAY 10 <sup>TH</sup>		FRIDAY 11 <sup>TH</sup>		SATURDAY 12 <sup>TH</sup>		SUNDAY 13 <sup>TH</sup>	
CAMDEN TOUR		Enjoy the sunset at Primrose Hill		SCAVENGER HUNT		NATIONAL HISTORY MUSEUM		Today's Suggestion! Why don't you go for a lovely walk along Shoreditch Street Art Tour		Why not visit Cambridge & Ely		Why not visit CAMBRIDGE and visit some museums around! One of the museums: Fitzwilliam	
Welcome to London! Guided tour of Camden for New students! Meet in the Study Lounge @ 2.30pm		Tube: Chalk Farm Tube: Old Street						Tube: Old Street		£37		Location: Trumpington St, Cambridge CB2 1RB	
MONDAY 14 <sup>TH</sup>		TUESDAY 15 <sup>TH</sup>		WEDNESDAY 16 <sup>TH</sup>		THURSDAY 17 <sup>TH</sup>		FRIDAY 18 <sup>TH</sup>		SATURDAY 19 <sup>TH</sup>		SUNDAY 20 <sup>TH</sup>	
CAMDEN TOUR		Check out Prince Diana Memorial Fountain		WRITING WORKSHOP		VICTORIA AND ALBERT MUSEUM		Why not visit Southbank Market		Why not visit Colchester		Have a look at some of the animals hiding at Kentish Town City Farm!	
Welcome to London! Guided tour of Camden for New students! Meet in the Study Lounge @ 2.30pm		Location: Hyde Park						Free Entry		£42		Free Entry	
MONDAY 21 <sup>ST</sup>		TUESDAY 22 <sup>ND</sup>		WEDNESDAY 23 <sup>RD</sup>		THURSDAY 24 <sup>TH</sup>		FRIDAY 25 <sup>TH</sup>		SATURDAY 26 <sup>TH</sup>		SUNDAY 27 <sup>TH</sup>	
CAMDEN TOUR		Check out The William Morris Gallery		BUZZER CLUB		NATIONAL PORTRAIT GALLERY		Today's suggestion! Why don't you go for a lovely Riverside walk London Bridge to Embankment?		Why not go for a trip and visit Cardiff		Why don't you explore the famous Portobello Road Market?	
Welcome to London! Guided tour of Camden for New students! Meet in the Study Lounge @ 2.30pm		Free Entry Location: Walthamstow						tube: London Bridge		£48		Take a walk through the colorful street and find some bargains!	
MONDAY 28 <sup>TH</sup>		TUESDAY 29 <sup>TH</sup>		WEDNESDAY 30 <sup>TH</sup>		THURSDAY 31 <sup>ST</sup>		FRIDAY 1 <sup>ST</sup>		SATURDAY 2 <sup>ND</sup>		SUNDAY 3 <sup>RD</sup>	
CAMDEN TOUR		Today's suggestion! Chinatown		HALLOWEEN PARTY		TATE BRITAIN							
Welcome to London! Guided tour of Camden for New students! Meet in the Study Lounge @ 2.30pm		Tube: Piccadilly Cross											

The yellow-highlighted boxes are led by one of our teachers/activity leaders, while the purple-highlighted boxes are suggested to students. NOTE: NB : In the UK under 18s are allowed in the pubs but it is illegal to drink alcohol.





# WHERE TO STAY IN LONDON



## HOMESTAY FAMILY

All our host families have been carefully selected to meet British Council requirements. We do our best to match you with just the right family to make your stay in London a happy one!

Staying with a host family is ideal for you if you wish to have English speaker interaction each evening and to learn more about British culture and lifestyles.

Homestay supplement:

- Additional £60/week for private bathroom facilities

ROOM TYPE	PRICE (PER PAX / PER WEEK)
Bed & breakfast	£245
Half-board*	£280
Full-board*	£320
Walking distance bed & breakfast#	£305
Walking distance half-board*#	£375
Walking distance full-board	£420
Twin half-board*	£225
Twin bed & breakfast	£265
* bed, breakfast and evening meal # within walking distance of school	



SUPPLEMENT	PRICE (PER PAX / PER WEEK)
Special Diets: Gluten-free, Lactose-free, Vegan, Halal, Nut-free	Plus £25
Summer supplement (June 22nd - August 23rd)	Plus £25
Christmas supplement (December 21st to January 3rd)	Plus £25

AVAILABLE	BOARD BASIS	MIN. AGE	MIN. BOOKING PERIOD	CHECK IN	CHECK OUT	FACILITIES	GUEST POLICY	CANCELLATION POLICY	TRAVEL ZONE
Year round	Bed & Breakfast Half Board Full Board	16	1 week	Sunday after 3pm and before 9pm	Saturday before 11am	Bed linen, towel, free wifi on request	None permitted	2 weeks notice.  If after arrival, 2 weeks payment plus accommodation booking fee	All



# WHERE TO STAY IN LONDON

## AXO ISLINGTON (BRONZE ENSUITE)

Bloomfield Court is a residence Located in Zone 2, and just a 10-minute walk to Holloway Road and Archway Underground Stations, as well as a 35 minute walk away from TopUp Learning London School.

ROOM TYPE	PRICE (PER PAX / PER WEEK)
Single room with private bathroom and Self-catering	£390



AVAILABLE	BOARD BASIS	MIN. AGE	MIN. BOOKING	CHECK IN	CHECK OUT	FACILITIES	GUEST POLICY	CANCELLATION POLICY	TRAVEL ZONE
Year round	Self-catering	18	1 week	Sunday after 3pm	Saturday at 9am	Single rooms with your own private bathroom, study area, large bed , on-site Laundrette, free Internet, and plenty of storage space, and shared kitchen/living areas	None permitted	4 weeks + booking fee are not refundable	2

### LOCAL AREA

THE LOCAL AREA IS LIVELY AND OFFERS A WIDE RANGE OF ENTERTAINMENT OPTIONS, INCLUDING BARS, RESTAURANTS AND CAFES ALONG WITH A CINEMA ALL WITHIN FEW MINUTES WALK OF THE BUILDING.



BUS 29 OR 253 (STOP R)



CAMDEN TOWN STATION  
TopUp Learning London



TOTTENHAM COURT STATION



TRAFALGAR SQUARE



CAMDEN HAWLEY CRESCENT (BRONZE ENSUITE)

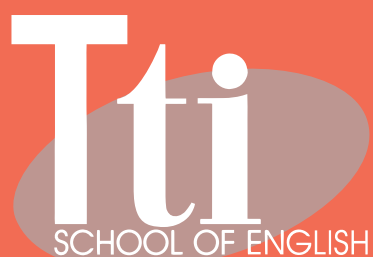


Our Bronze Studio is perfect for those who want to chill out in their own space! Measuring around 19m<sup>2</sup>, enjoy the comfort of your very own en suite bathroom and study area. Cook up a storm in your kitchenette and relax in your dining space after a long day. In terms of space, you get a big wardrobe in your studio, perfect for all your bits and bobs. All you need to do is sit back, relax, and have fun!

ROOM TYPE	PRICE (PER PAX / PER WEEK)
Single room with private bathroom and Self-catering	£550

AVAILABLE	BOARD BASIS	MIN. AGE	MIN. BOOKING	CHECK IN	CHECK OUT	FACILITIES	GUEST POLICY	CANCELLATION POLICY	TRAVEL ZONE
Year round	Self-catering	18	1 week	Sunday after 3pm	Saturday at 9am	Communal Lounge, 1Gbps* Wired Internet, Onsite Maintenance, Laundry Room, Communal TV, Bike Storage	None permitted	4 weeks + booking fee are not refundable	2





148 Camden High Street,  
London

+44 (0) 20 7419 2300

info.london@topuplearning.com

www.ttischool.com

